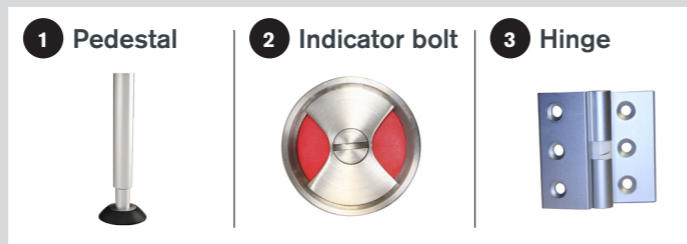
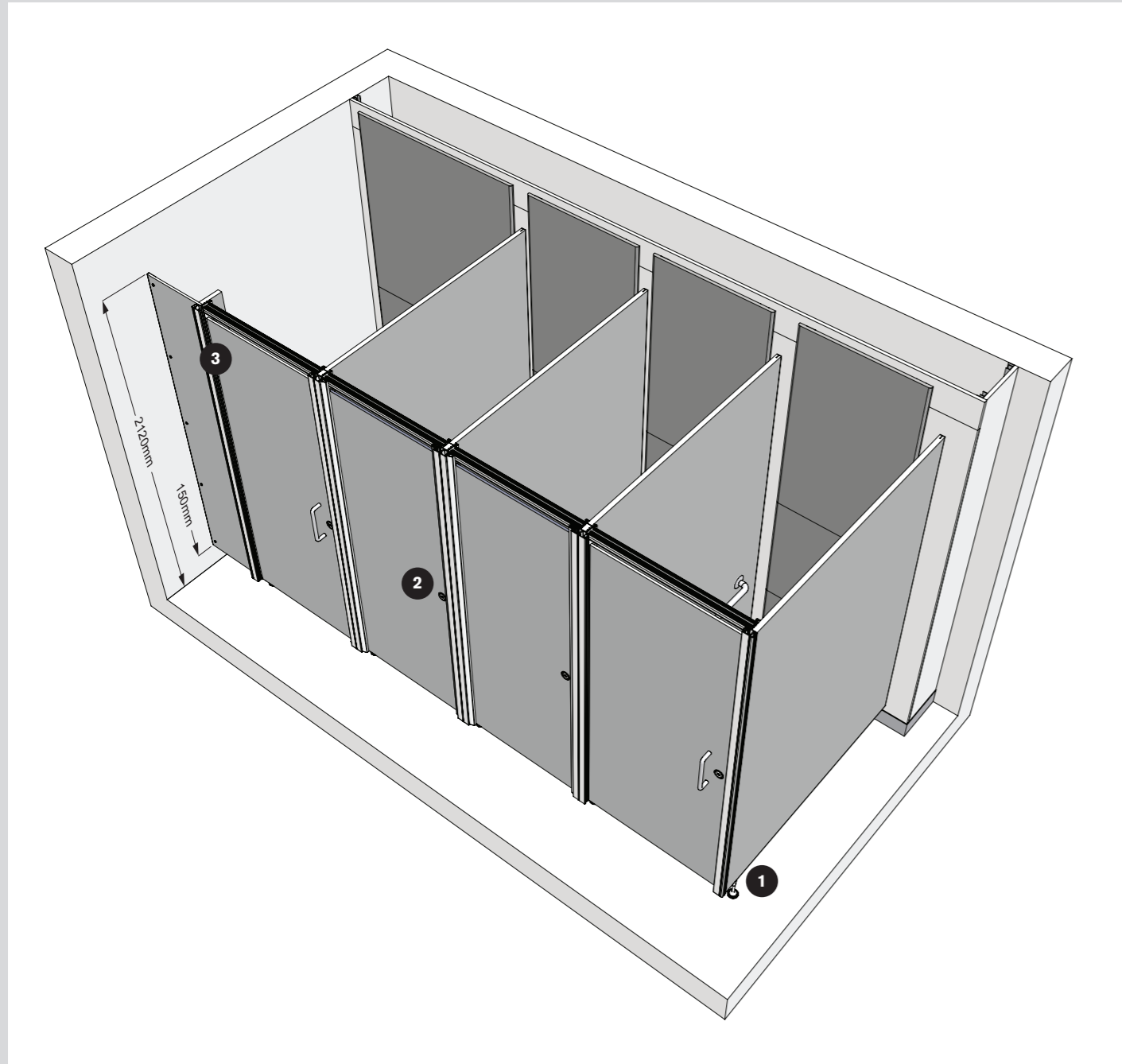


# Technical Specifying System M



## Dimensions

**Standard height**  
2120mm

**Maximum depth**  
2068mm

**Floor clearance**  
150mm

**Minimum ceiling clearance**  
100mm

## Performance

System M cubicle partitions are manufactured in 26mm medium density fibreboard (MDF) faced both sides with high pressure laminate (HPL) and lipped with ABS.

Doors are manufactured in 13mm solid grade laminate (SGL) with radiused edges.

**HPL**  
For more heavily used washrooms, panels are heat, scratch and impact resistant.

**SGL**  
Solid grade laminate is extremely resistant to impact and all surfaces are impervious to water.

## Detailing

**Panels and doors**  
HPL panels and SGL doors.

**Colour finish**  
**HPL and SGL**  
34 colours from the standard range.  
**Cubicle hardware**  
Stainless steel and satin anodised aluminium.

**Edge treatment**  
**HPL**  
Matching ABS lipping.  
**SGL**  
Polished black radiused edge.

**Headrail**  
High strength satin anodised aluminium U-section headrail.

**Pilasters**  
Unique, patented, pivoting high strength satin anodised aluminium shaped pilaster fixed to cubicle partition. Pilasters allow doors to open outwards in an emergency.

**Cubicle hardware**  
**Indicator bolt**  
Stainless steel circular faced indicator bolt with emergency release and nylon keep.

**Hinge**  
Satin anodised aluminium anti-tamper lift off rise and fall hinge.

**Pedestal**  
150mm stainless steel height adjustable pedestal.

**Fixings**  
Partition to wall: satin anodised aluminium T-section.

**Accessories**  
Coat hooks and toilet roll holders available.