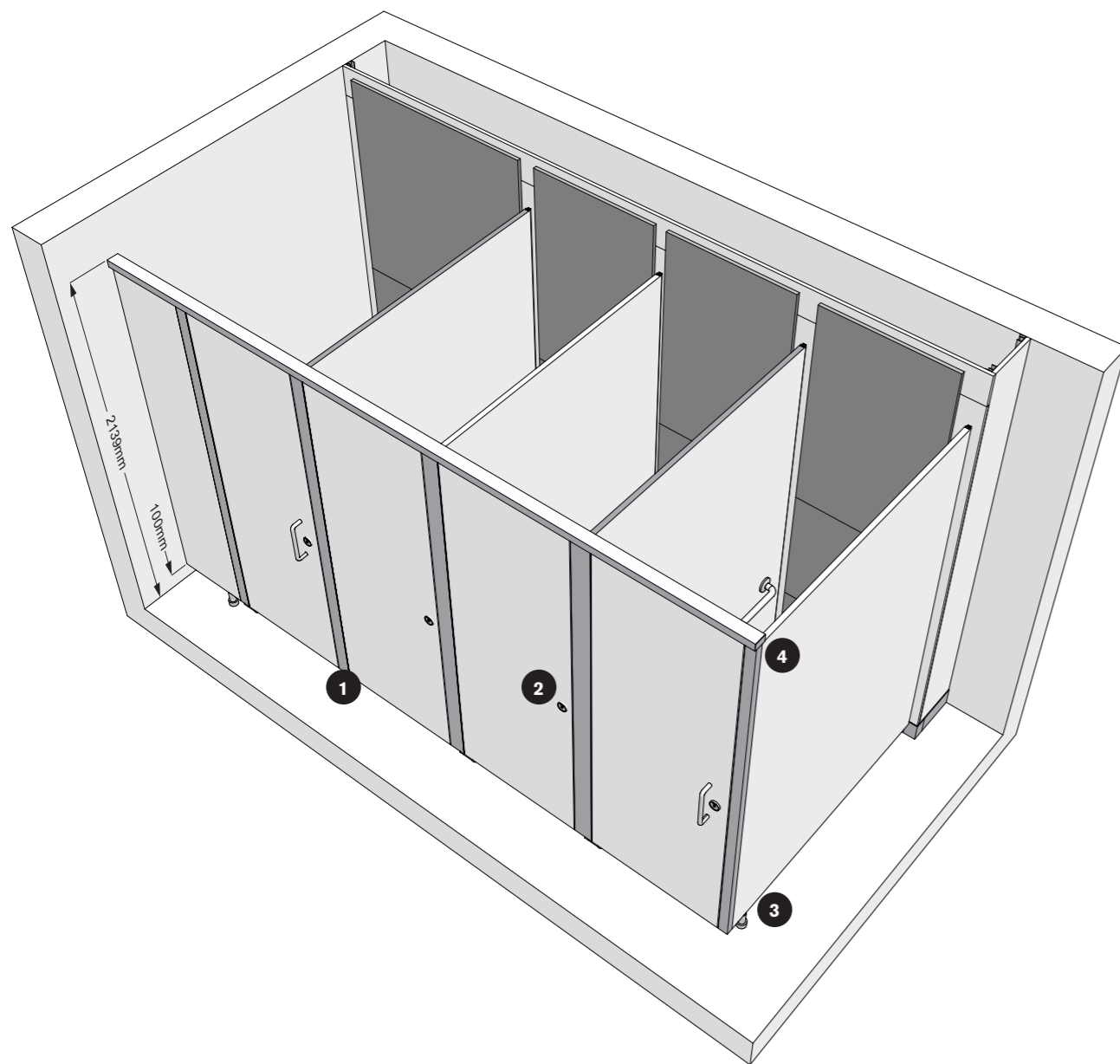


Technical Specifying Sahara



1 Pivot hinge



2 Indicator bolt



3 Pedestal



4 Headrail cap



Dimensions

Overall height

2139mm

Maximum height

HPL	2909mm
ColourCoat	2909mm
ColourCoat High Gloss	2909mm
Veneer	2909mm

Maximum depth

2086mm

Floor clearance

100mm as standard (also a choice of 50mm or 150mm)

Minimum ceiling clearance

20mm

Performance

Available in four material options, Sahara is suitable for the most prestigious washroom environments allowing you to specify with complete confidence.

Veneer

Doors are 35mm nominal thickness chipboard faced with real wood veneer. Partitions are 26mm nominal thickness with an MDF core, faced with real wood veneer. Door and partition edges are lipped with matching ABS from the standard Venesta colour range.

ColourCoat

Doors are 35mm nominal thickness and partitions are 26mm nominal thickness, both with an MDF core. Sprayed with a coat of primer and finished with 20% gloss pigmented polyurethane lacquer.

ColourCoat High Gloss

Doors are 35mm nominal thickness and partitions are 26mm nominal thickness, both with an MDF core. Sprayed with a coat of primer and finished with 80% gloss pigmented polyurethane lacquer.

HPL

Doors are 36mm nominal thickness and partitions are 26mm nominal thickness, both with an MDF core.

Detailing

Panels and doors

Available in HPL, ColourCoat, ColourCoat High Gloss and Veneer.

Colour finish

HPL

34 colours from the standard range.

ColourCoat and ColourCoat High Gloss
Any RAL classic colour, excluding metallic and fluorescent colours.

Veneer

11 Alpi real wood veneers (varying price points).

Cubicle hardware

Satin anodised aluminium and stainless steel.

Edge treatment

HPL

Matching ABS lipping.

ColourCoat

Edges are sprayed with one coat of primer and finished with 20% gloss pigmented polyurethane lacquer.

ColourCoat High Gloss

Edges are sprayed with one coat of primer and finished with 80% gloss pigmented polyurethane lacquer.

Veneer

Complementing ABS edging from the standard range.

Pilasters

High strength, slimline extruded satin anodised aluminium pilasters specially designed to conceal fixings.

Headrail

40mm slimline satin anodised aluminium with matching end cap.

Cubicle hardware

Indicator bolt

Stainless steel indicator bolt with slimline mortice lock and unique emergency release function.

Hinge

Stainless steel soft self-closing pilaster mounted pivot hinges, supplied as an assembly.

Pedestal

Stainless steel 100mm height adjustable (+10mm) as standard. Also a choice of 50mm or 150mm height pedestals.

Fixings

Partition to wall: Satin anodised aluminium Z-clip.

Pilaster to partition: Aluminium Z-clip.

Pilaster to wall: Satin anodised channel and Z-clip.

Accessories

Coat hooks and toilet roll holders available.