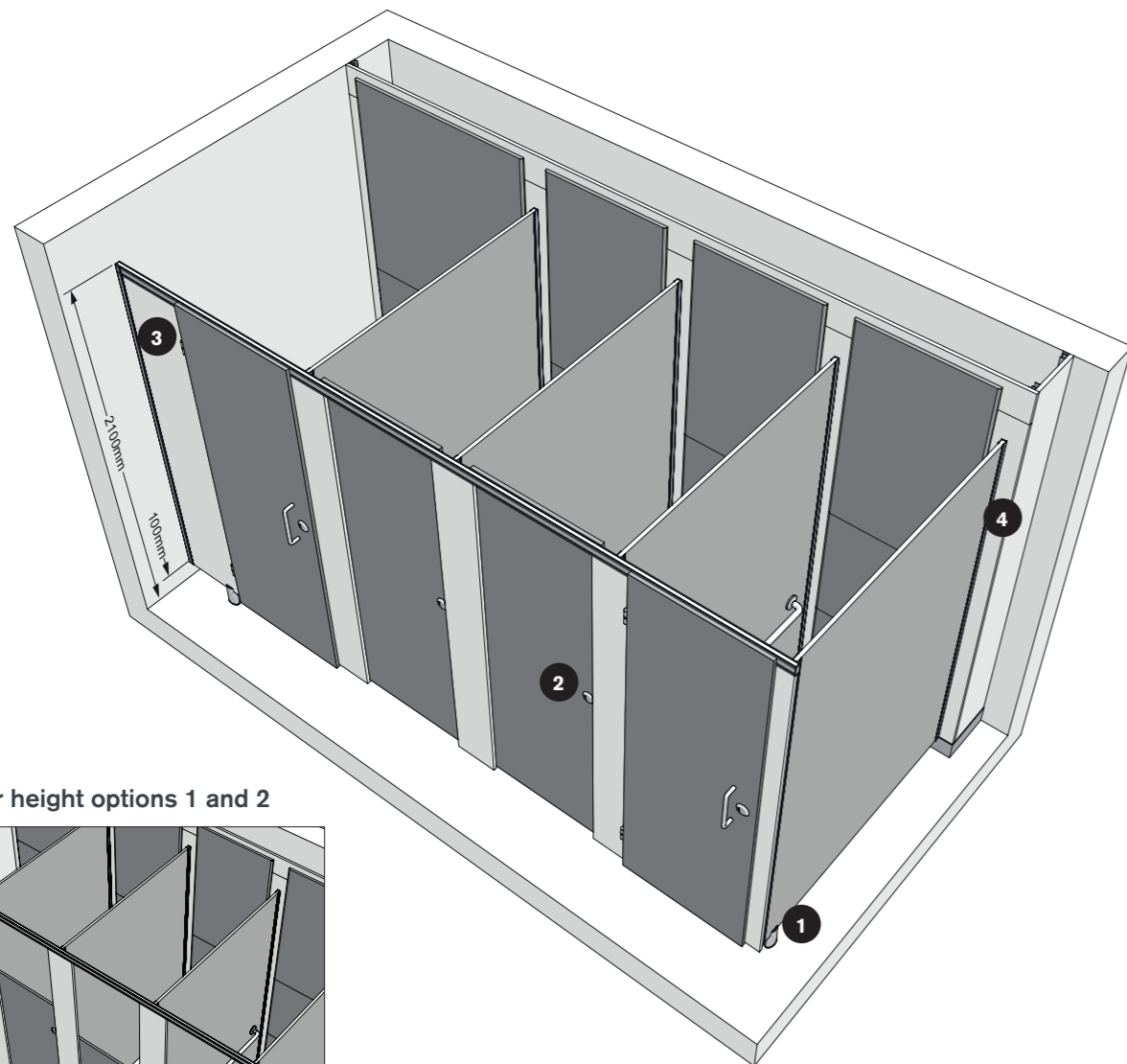
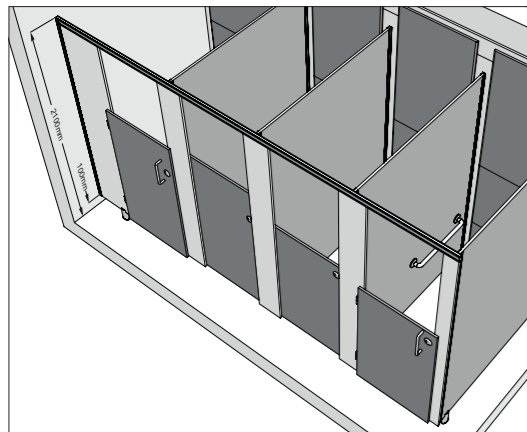


Technical Specifying Award



Children's door height options 1 and 2



1 Pedestal



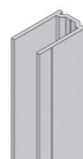
2 Indicator bolt



3 Hinge



4 U-channel



Dimensions

Overall height

2100mm

Door height options

Standard	2000mm
Children's option 1	1300mm
Children's option 2	1100mm

Maximum depth

MFC	2097mm
HPL	2057mm
SGL	1921mm

Floor clearance

100mm

Performance

Available in three material options, Award is suitable for every type of wet or dry environment, allowing you to specify the most appropriate option to meet site requirements and your budget.

MFC

For dry environments with low risk of vandalism. Panels are manufactured from 19mm nominal thickness high performance moisture-resistant melamine faced chipboard. Edges lipped with ABS.

HPL

For more heavily used washrooms, panels are heat, scratch and impact resistant. Manufactured from moisture-resistant chipboard faced with high pressure laminate, panels are 19mm nominal thickness. Edges lipped with ABS.

SGL

Solid grade laminate is extremely resistant to impact and all surfaces are impervious to water. Panels are 13mm nominal thickness with polished black radiused edges.

Detailing

Panels and doors

Available in MFC, HPL and SGL.

Colour finish

MFC, HPL and SGL
34 colours from the standard range.

Cubicle hardware

Light Grey ABS, satin anodised aluminium or satin anodised effect powder coated zinc.

Edge treatment

MFC and HPL
Matching ABS lipping.

SGL

Polished black radiused edge.

Headrail

Rigid satin anodised aluminium headrail with matching end cap.

Cubicle hardware

Indicator bolt

Easy grip sliding bolt with emergency release facility and concealed fixings. Available in satin anodised effect powder coated zinc or Light Grey ABS.

Hinge

Anti-finger trap satin anodised aluminium rise and fall butt hinge. Outward opening hinge option available.

Pedestal

Height adjustable for uneven floors, with concealed fixings, available in Light Grey ABS or satin anodised effect powder coated zinc. Where possible, pedestals are located on partitions to give a floating appearance.

Fixings

Partition to wall: Continuous satin anodised aluminium U-channel.
Pilaster to partition: Continuous satin anodised aluminium U-channel.
Pilaster to wall: Continuous satin anodised aluminium U-channel.

Accessories

Coat hooks and toilet roll holders available.