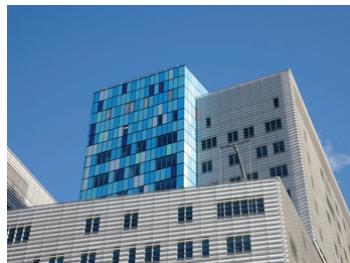


# Case Study

## The Royal London Hospital

# Venesta



“Venesta’s product is both quick and easy to install. This, combined with an experienced CAD and manufacturing team made them the ideal choice when procuring a washroom package of this size and complexity.”

Marcus Lynes, Shire Integrated Systems Ltd (installers for Skanska)

Part of Barts and The London Hospital Foundation Trust, one of Britain’s leading healthcare providers, The Royal London Hospital at Whitechapel and St Barts Hospital at St Paul’s both have a reputation for making outstanding contributions to modern medicine.

During an extensive new building scheme Venesta was chosen to supply new washroom and shower solutions throughout the two hospitals. These were both huge projects and a challenge that we relished.

To ensure smooth running, we provided a full-time project manager who was responsible for the surveying, scheduling and production drawing of every unit supplied. The client chose IPS and Quantum SGL cubicles. The latter’s solid grade laminate panels are extremely impervious to water, making it an ideal solution for healthcare environments. IPS’s compliance with HTM64 also ensures the very highest levels of hygiene and infection control.

The quality of our service was crucial to the success of this project. We offered a short lead time on all products, ensuring our client had total piece of mind, knowing that deadlines could always be met, even when unforeseen problems arose onsite.

Contact us to order our new brochure. Call 01474 353333. [www.venesta.co.uk](http://www.venesta.co.uk)